



# ENERGY AGENTS

GROUNDWORK  
NORTH WALES

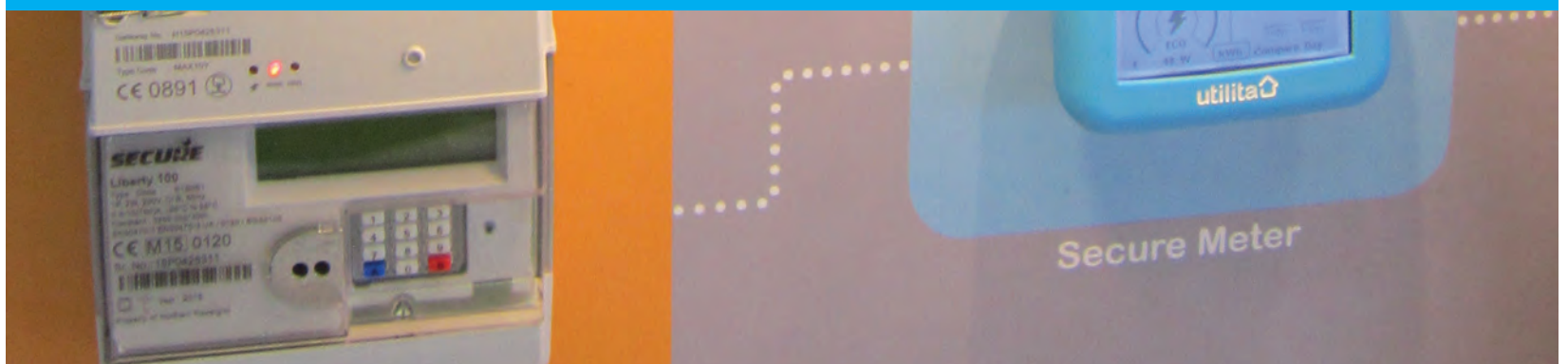
The Energy Agents STEM Challenge will help pupils to champion the environment and become enthusiasts of positive behaviour change by designing their ultimate energy efficient home!

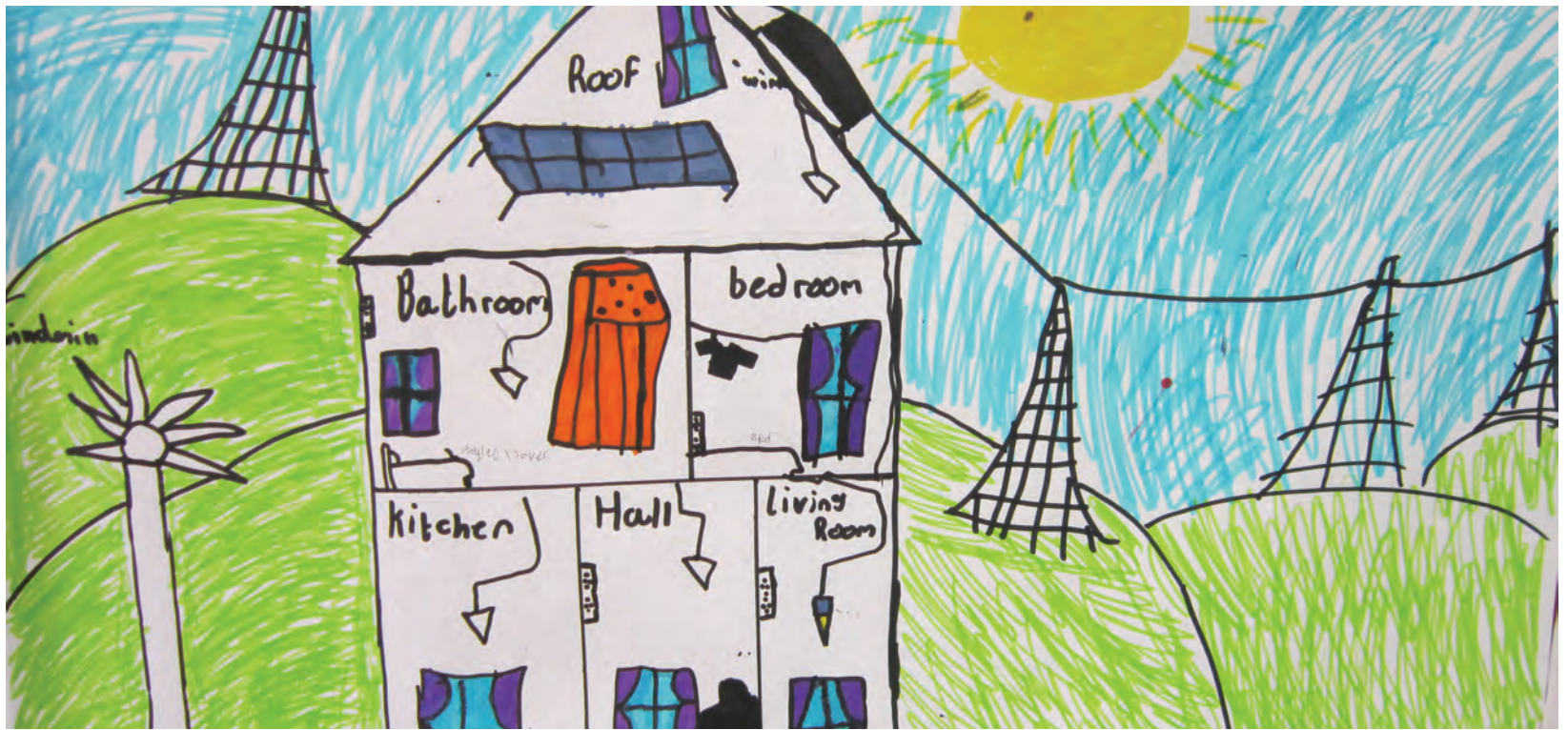
The activities will also support pupils to consider ESDGC and issues such as:

- energy generation & consumption
- carbon emissions
- renewable energy
- global warming



Supporting the well being of future generations act (2015) goals of a more prosperous and globally responsible Wales.





## This is a great way to introduce the whole topic of energy at KS2

Through personal investigation, pupils will first be introduced to how energy is made and reaches their homes. Your class will work together to explore a variety of home efficiency tools, investigating & evaluating a range of familiar products.

Pupils will think about how everyday appliances work and how they are used. Pupils will also learn about fuel and energy sources and how they can become more energy aware to adopt positive behaviour changes for now and in the future.

### STEM Learning outcomes

- Know how energy is generated and transported, and the potential problems this may cause.
- Learn about renewable sources of energy (wind and solar), and why this type of energy is important for our future.
- Know about everyday appliances that use electricity
- Recognise how people can improve the environment or damage it.
- Carry out an investigation using various fuel efficiency measures.
- Discover how smart meters help families become more energy efficient.
- Suggest alternative ways of making products.
- Team Challenge - design the most energy efficient home.

**ENERGY AGENTS** can be delivered to your class as a half-day, full-day or to two different classes over the course of a school day

#### Cost

£130	Half-day single group (up to 35 pupils)
£255	2 x Half-day single group (up to 70 pupils) - am & pm
£255	Extend the interactive learning to a full day (single group)

To book Energy Agents at your school please contact the Education Team by emailing [education@groundworknorthwales.org.uk](mailto:education@groundworknorthwales.org.uk) with your enquiry



[www.groundworknorthwales.org.uk/education](http://www.groundworknorthwales.org.uk/education)

Head Office 3-4 Plas Power Road, Tanyfron, Wrexham LL11 5SZ / 01978 757524



BUDDSODDWR MEWN POBL | INVESTORS IN PEOPLE

